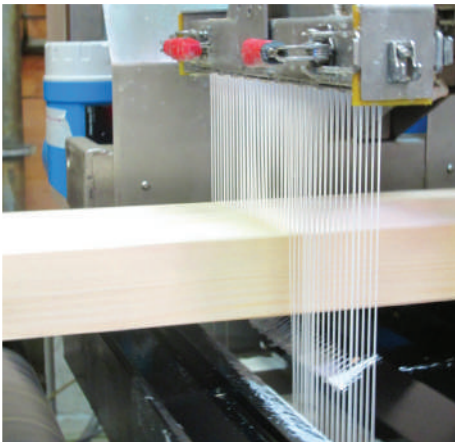
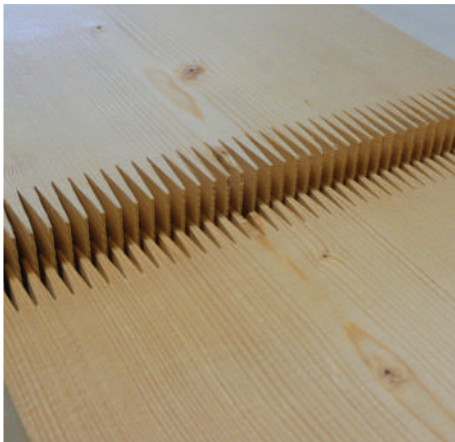


TECHNICAL WOOD

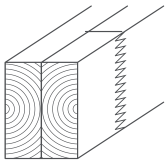
The advantages of dual-laminated and glued-laminated timber

- » Standardized mechanical resistance.
 - » Dimensional stability.
 - » Very few cracks.
- » No deformation.
 - » Reduction of natural wood singularities.
 - » Contemporary aesthetics.



Dual-laminated spruce & douglas fir

Our sections and packages

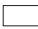


DESCRIPTION

- » Made with **2, 3 or 4 solid timber boards**, finger-jointed then glued-laminated with heart facing outwards.
- » **Mechanical resistance class C24.**
- » **Factory drying 14%.**
- » Possibility of **class 2 treatment.**
- » Normative reference : EN 14080 : 2013

CROSS-LAMINATED SPRUCE & DOUGLAS FIR - STANDARD LENGTH 13.00 M

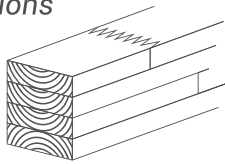
Height Thickness		100	120	140	160	180	200	215	220	240	260	280
DUO	80	--	36	32	21	24	25	25	25 / 15	20	--	--
	100	36	27	24	21	18	20 / 10	20	20	16 / 8	16	--
	120	--	24 / 16	--	21	18 / 15	18 / 10	15	15	15 / 8	16	12
	140	--	--	21 / 14	--	18	15	13	--	12	12 / 8	12
	160	--	--	--	18 / 12	--	12	--	--	12	12	8
TRIO	100	--	--	--	--	--	--	--	--	--	--	--
	180	--	--	--	--	12 / 6	10	--	--	10 / 10	8	8
	200	--	--	--	--	--	10 / 5	--	--	8	8 / 4	8
	240	--	--	--	--	--	--	--	--	8	--	4
4 PIECES	280	--	--	--	--	--	--	--	--	--	--	4

 Spruce package

 Douglas fir package

Glued-laminated spruce

Our sections



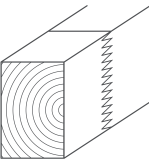
DESCRIPTION

- » Dry wood, finger-jointed, glued and planed 4 faces with chamfers.
- » Stable wood with high mechanical resistance.
- » **GL24 H visible quality.**
- » **Artificial drying 14%.**
- » Normative reference : EN 14080 : 2013

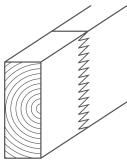
height width	120	160	200	240	Every 40 mm	1240
80	<div>STANDARD in 12.00 m and 13.50 m</div> <div>OR</div> <div>SPECIAL CUT per unit from 6.00 m to 14.00 m</div>					
90						
100						
120						
140						
160						
180						
200						
220						
240						

Finger-jointed solid timber & finger-jointed framing timber

Our sections and packages



FINGER-JOINTED
SOLID TIMBER



FINGER-JOINTED
FRAMING TIMBER

DESCRIPTION

- » Finished product planed 4 faces with chamfers.
- » **C24 non-visible** quality.
- » **Artificial drying 18%.**
- » Possibility of **class 2 treatment.**
- » Normative reference EN 15497 : 2014

The advantages of finger-jointed timber

- » Made from dried solid wood, finger-jointed and cleared of any defect, these long products allow optimized cutting.

FINGER-JOINTED TIMBER WOOD - STANDARD LENGTH 13.00 M									
width thickness	80	100	120	140	160	180	200	220	240
60	65	66	54	48	35	36	30	30	20
80	--	44	36	--	28	--	25	25	20
100	--	--	--	--	--	--	20	20	--
120	--	--	27	--	--	--	--	--	12

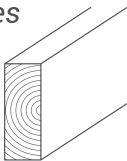
FINGER-JOINTED FRAMING TIMBER - STANDARD LENGTH 13.00 M							
width thickness	120	145	160	180	200	220	240
45	72	56	48	48	40	35	32

Non-finger-jointed framing timber

Our sections and packages

DESCRIPTION

- » Dry wood at 18%.
- » Planed 4 faces with chamfers.
- » **Mechanical resistance** class **C24.**



NON-FINGER-JOINTED FRAMING TIMBER - LENGTH 5.10 M AND 5.40 M					
width thickness	95	120	145	160	220
45	165	135	120	105	75

Possibility of 6m length